



13th annual

LED'S 2012

Innovation, Value Creation, and Real-life Applications

October 10 – 12, 2012

Hilton San Diego Resort & Spa, San Diego, CA

CONFERENCE HIGHLIGHTS

- ▶ Hear from the fore front of applications - at least 6 case studies presented by end users representing retail, general office, municipal lighting, hospitality, education and horticulture
- ▶ Find out what it would take for major distribution channel gatekeepers to carry your product instead of your competitors
- ▶ Plan your innovation roadmap with the help of Heads of R&D and Innovation from Toshiba, Cooper Lighting, Osram Sylvania, Cree and Acuity Brands
- ▶ Find out how Chip Israel, President, Lighting Design Alliance and Brian Stacy, Lighting Leader Americas Region, Arup Lighting make their decisions on specification so that you can make sure your products make the grade
- ▶ Benchmark your product development strategy against well established players and new kids on the block by attending the focus sessions on optics, controls, devices and packages
- ▶ Network with hundreds of lighting industry leaders in our exhibition hall

"A great forum to learn and participate in the future of solid state lighting."

**Solid State Lighting Strategist,
HUBBELL LIGHTING**

Simply the best LED technical information exchange."

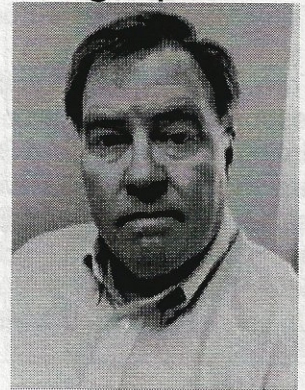
**Design Engineer,
The Boeing Company**



www.ledsconference.com

Don McDougall, Vice President & General Manager, Solid State Capital Services

Don McDougall is the Vice President and General Manager of Solid State Capital Services. Many of the services and procedures used in the Certification for the EPAct tax deductions were pioneered by him. This includes the utilization of sampling techniques for larger portfolios of properties, and the integration of abandonment and other beneficial tax procedures that can be used to greatly reduce the cost of solid state lighting systems. His work has been reviewed and accepted by the IRS and he has defended projects through IRS audits and appeals.

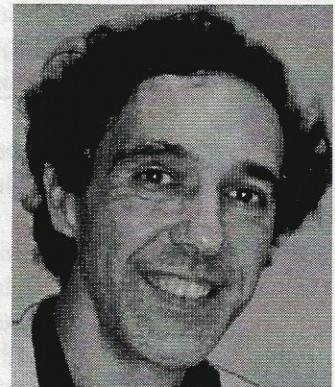


His previous speaking experience includes (most recently) the LED Show in Las Vegas, and multiple presentations to the CAPCA. In addition, he has spoken at the Solid State Light Conference and numerous regional speaking engagements such as presentations to all the AIA and USGBC chapters in Southern and Central California for education on EPAct. The most recent engagement was a 500 person symposium hosted by the USGBC and PG&E in central California for educational purposes related to energy conservation. In the last 12 months Mr. McDougall spoke at two national conferences and eight regional events.

Mr. McDougall has had multiple articles on this and related topics printed in national publications. In addition to the tax based services for LED lighting he is a nationally recognized expert in the valuation of antique buildings.

Ruggero Micheletto, PhD., Professor, Dept. of Nanosystem Sciences Graduate School of Nanobiosciences, Yokohama City University, Japan

Prof. Micheletto got his PhD in solid state physics in Italy at the university of Bologna in 1992. He worked as Post-Doctoral Researcher in Japan at the Kanagawa Academy of Science first, then he continued his researcher career in Optics and Solid State Optics in Riken, Japan. He was then promoted Assistant Professor at Kyoto University in 1999 and continued his academic career there until he was elected Associated professor in 2008 and then full professor in 2012 at Yokohama City University, his current position.



Prof. Micheletto has 43 scientific publications in high standard international journals, about 100 publications in total. Published the best technical paper of the year awarded by the Japanese Society of Surface Science (2000) and made a patented method for nano-particles deposition cited by independent authors as "Micheletto method". He was also awarded multiple research grants, in years 2004-2006 of about

600.000 euros for research in Surface Plasmon Resonance biosensing. In Year 2012 was awarded a Japanese National Research Grant (Kaken) equivalent to 42.000 Euros for research in the field of LED emission and characterization.

For more on Professor Micheletto, please visit <http://ruggero.sci.yokohama-cu.ac.jp/member/ruggero.php>